

GRACEFUL

*Spring*

# Table of contents

- 2-3 New Products
- 4-5 Look Your Best  
"Spring Silk"
- 6-7 Skin Therapy
- 8-9 Blush/"Shimmer"
- 10-11 Skin Care Sets
- 12-13 Million Dollar Face  
"Frills & Thrills"
- 14-15 Eyeliners  
"Wonders of Print"
- 16-17 Lipsticks & Lipliners
- 18-19 Signia/"All Natural"
- 20-21 Palettes/"Red Hot"
- 22-23 Eyeshadows

# New Products

## 4 Fresh Lipsticks for Spring!

Try our four NEW soft and creamy lipsticks that have just been added to our line!



Our new shades are: **A** #840 El Dorado Copper  
**B** #841 Dark Amethyst **C** #843 Couture Gold  
**D** #842 Dahlia Red



## Top Five Eye Candy

# 1

### Fat Lash

Need volume? Fat Lash is great for those lashes that need a little "lift". Apply before your mascara to give your lashes a thicker, longer look. #652 0.32 fl. oz.





# Look Your Best Collection



## #1310 Your choice of colors:

- 1 Lipstick
- 1 UltraSoft Lipliner
- 1 Dry Blush
- 3 Eyeshadows
- 1 UltraSoft Eyeliner
- 1 Mini Blush Brush
- 1 Double-Ended Applicator
- 1 Magnetic Compact



## Spring Silk

We see soft silk and sheer fabric used for everything this season. This style calls for pastel colors in pink, light purple, white and gold. It's the fabric of the season, so don't leave home without it.

## Top Five Eye Candy

# 2

### Controla-Brow

Take control! Controla-Brow helps manage and set brows all day, so you'll never have a hair out of place.  
#650, 0.32 fl. oz.



Pamper yourself with our

# Skin Therapy Products

## Top Five Eye Candy 3

### ColorBind

Bind your color! ColorBind helps prevent lipstick and eyeshadow color from fading, bleeding, or creasing. Now it's easy to make your eyeshadow and lip color last all day. #683, 0.32 oz.

### Moisturessence with Antioxidants

Moisturessence with Antioxidants is lightweight and has a non-greasy feel that will delight all skin types. Yet it does more than just moisturize! It contains a non-irritating sunscreen that protects against both UVA and UVB rays. It also contains Vitamins A and E which, when combined with Green Tea Extracts, helps to fight free-radicals and decrease the signs of premature aging caused by sun and environment. #142, 4 fl. oz. (120 ml)

### Vitamin E Stick

Vitamin E Stick is a convenient formulation of rich emollients that can smooth, enrich, and protect weather-stressed skin. With only a few applications, you will see chapped, dry areas become soft and supple. Plus, it has sun screen of SPF12 #168, .12 oz.

### Honey & Almond Exfoliator

Gently stimulates skin for a fresher look. Honey & Almond Exfoliator is gentle enough for all skin types but is especially designed with sensitive skin in mind. The combination of honey and almonds creates a natural exfoliation, leaving delicate skin soft and rejuvenated. #F120, 2 fl. oz. (60 ml)

### Lip Amplifier

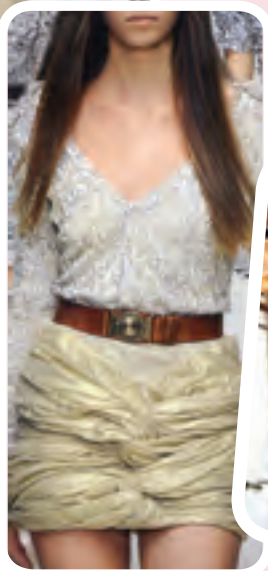
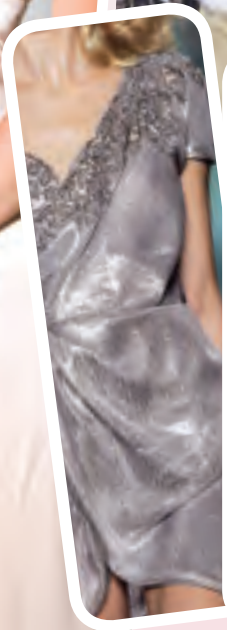
Contains a special blend of botanical peptides and collagen-enhancing properties which help minimize the appearance of fine lines often found around the mouth. Its hydrating formula coats your lips with nourishing moisture so lips feel soft, smooth and better defined. If your lips have become thinner with age or they've simply lost their youthful fullness, then let our Lip Amplifier help you regain what you've lost! #170, .34 oz. (10 ml)

### Ceramide Care Visage Anti-Aging Serum

Ceramide goes beyond fortifying your skin's protective barrier against moisture loss and environmental stress. It actually helps replenish what your skin has lost with time. Contains Vitamins A, C and E, plus Ceramide, a superior, natural skin therapy combination. #B139 45 Capsules (15.75 ml)







# Blush

## Shimmer, Shimmer, Shimmer!

This is a detail you don't want to skip this season. We see lots of clothing pieces accessorized with rhinestones, sequins and shimmery material. Don't be fooled by the trend; it does not work for makeup! Makeup is kept simple, depending on your desired look for day or evening. Bronzer is always a key makeup product to have in the Spring/ Summer. Applying a little here and there will really make you shine with this trend!



Displayed blush is Golden Blossom #1347

A dry, velvety soft blush that blends effortlessly and is long lasting.

**.10 oz.**

**CREME BLUSH .10 oz.**



**Divine**  
#6673

### Autumn



**Monte Carlo**  
#1378



**Desert Spice**  
#6670



**Saucy**  
#6365



**SunKiss**  
#6677

### Spring



**Pink Sorbet**  
#6671



**Sweet Elite**  
#6350



**Golden Blossom**  
#1347



**Tender Peach**  
#1391

### Winter



**Rosetta Bronzer**  
#680



**Raspberry Meringue**  
#1393



**SugarBerry**  
#1388



**Winterberry**  
#1398

### Summer



**Appleberry**  
#1359



**Whisper Rose**  
#1394



**Rosetta Bronzer**  
#680

# Top Five Eye Candy 4

## Liquid Eye Makeup Remover

Gentle, yet instantly removes eye makeup with no greasy after feel. Conditions delicate eye area as it cleans. A liquid eye makeup remover that is recommended for all skin types. #108, 4 fl. oz. (120 ml.)



## Finelle®

4 Step Skin Care Regimen

- #F8101, Normal/Dry
- #F8102, Normal/Oily

### Cleansing Creme

Used with water, gently removes makeup and residue. #F001, 6 fl. oz.

### Freshener

Completes cleansing by maintaining the balance of the skin's pH. #F002, 6 fl. oz.

### Moisturizer

Quickly absorbed to reduce visibility of dry skin and fine lines. #F003, 4 fl. oz.

### Oil Control Wash

Helps prevent clogged pores without drying or irritating skin. #F006, 6 fl. oz.

### Oil Control Toner

Completes the cleansing process. Restores the skin's balance. #F007, 6 fl. oz.

### Oil Control Hydratant

Penetrates quickly to provide the oil-free essential hydration your skin demands. #F008, 4 fl. oz.

### Biotech 21 For Eyes

Supports and restores thin, aging tissue by encouraging production of new connective tissue. #F116, .5 fl. oz. (15 ml)

• • Dots reference the sets



The vase shown in photo not for sale.

## RejeuvaMetrics® Basic Trio #B015

**Deep Facial Cleanser**  
Loosens, dissolves and floats away makeup, soil and grime. Protects and helps maintain skin's natural moisturizer. #B101, 6 fl. oz.

**Balancing Toner**  
Maintains the skin's acid mantle protection. Alcohol free and leaves the skin refreshed. #B102, 6 fl. oz.

### Ultra-Moist Moisturizer

A superb concentrated, non-oily, fluffy creme designed to add needed moisture beneath the surface of your skin. #B115, 3.3 fl. oz.

Or

### Ultra-Rich Moisturizer

Holds and retains skin's natural moisturizers. #B103, 3.3 fl. oz.



# kin Care Sets

## AlphaCeuticals®

Starter System #2002A Includes:

### AlphaCeuticals-Wash

Start your daily regimen with this botanical cleanser that is gentle enough for dry, sensitive skin, yet effective enough to cleanse and detoxify oily skin. #200, 4 fl. oz.

### AlphaCeuticals-Toner

Neutralize the pH of the skin and remove any debris after cleansing. #202, 4 fl. oz.

### AlphaCeuticals Serums

Helps your skin look clearer, smoother and softer. Four different strengths to acclimate your skin to a continuous improvement process. 2 fl. oz.

### #204, Serum #5

#206, Serum #10  
#208, Serum #15  
#216, Serum #20

Your choice of One of these products:

### AlphaCeuticals Moisture Creme with Antioxidants

Soothes and softens as it quickly penetrates the skin. Normal to Dry/ Sensitive Skin  
#210, 1 fl. oz. (30 ml)

### Or AlphaCeuticals Hydro Gel with Antioxidants

A water based gel that has been specially formulated to hydrate oily skin. #132, 1.3 fl. oz.

Plus One of our Products below:

### AlphaCeuticals Eye Gel

Gently moisturizes the delicate skin around the eye.  
#214, .5 fl. oz.

### Or AlphaCeuticals Eye Creme

Nourish the skin with antioxidant vitamins A, C and E as you hydrate the eye area.  
#212, .5 fl. oz.



# Million Dollar Face Collection

#1311, Your choice of colors:

- 1 Color Perfection Creme or
- 1 Shadow Concealer or
- 1 Concealer Stick
- 1 Foundation
- 1 Marvelous Mascara
- 1 Loose Powder
- 1 UltraSoft Eyeliner
- 1 UltraSoft Lipliner
- 1 Dry Blush
- 3 Eyeshadows
- 1 Lipstick
- 1 Double-Ended Applicator
- 1 Mini Blush Brush
- 1 Magnetic Compact

## Frills & Thrills

Simple, flirty and feminine, what more could you ask for this season? Ruffles and lace help give the season a Feminine look. If you aren't into the Athletic or Natural look, try ruffles and other tops or dresses that have lace, rouching or other girlish elements. We don't see this trend with accessories so keep it to clothing. Makeup should always be simple and clean, reflecting a ladylike appearance.



Foundations: Choose from our many different Makeup Base formulas for beautiful color and coverage. 1 fl. oz.

Beige Ivory #304 Regular #3045 Oil-Free	Country Creme #306 Regular #3065 Oil-Free	Natural Beige #307 Regular #3075 Oil-Free	Fawn #308 Regular #3085 Oil-Free	Peach Ivory #312 Regular	Peach Rachel #316 Regular	Rose Beige #324 Regular #3245 Oil-Free	Rose Ivory #328 Regular #32857 Oil-Free	Taupe Beige #336 Regular	True Beige #340 Regular	Basic'ly Beige #F009	Lightest Look #F010	Sweet Ivory #F011	Candy Pink #F012	Rose Silk #F013
Golden Glow #F014	Bronzette #F015	Deep Golden Glow #F017	New Beige #F019	Golden Almond #F020	Sheer Ivory #B302	Rose Tone #B304	Warm Beige #B305	Mocha Beige #B307						



# Eyeliners

EYELINERS .01 oz.  
3 Refills per tube  
(Add an "A" at the end of the item #)

Spring

Winter

Autumn

Summer



CAKE EYELINERS .10 oz.



Sable #641



Charcoal #640



## The Wonders of Print!

It wouldn't be Spring without floral prints. We see these bright and cheery prints on every piece of clothing, not to mention accessories. Makeup is kept very simple for the lighter shades. We see soft pinks and lightly colored cheeks. For brighter and more dramatic floral prints we see a focus on one section of the face (with emphasis on either the eyes, cheeks or lips) versus an overly made up face.



# Lipstick Shades for all seasons!

Super creamy in rich,  
non-stop colors..12 oz.

## Autumn



**Couture Gold**  
#843 Frosted



**El Dorado Copper**  
#840 Frosted



**Harvest**  
#6635



**Honeysuckle**  
#6662 Lipsheer SPF 15



**Penny**  
#911



**South Sea Pearl**  
#829 Lipsheer SPF 15



**Terra Cotta**  
#942

## Spring



**Cinnamon**  
#866 Frosted



**Clearly Coral**  
#825



**Coral Dew**  
#872 Frosted



**Coral Mist**  
#874



**Freshest Ginger**  
#884



**Frosted Amber**  
#886 Frosted



**Pink Carnation**  
#6659 Lipsheer SPF 15

## Winter



**Burgundy Bliss**  
#862



**Clearly Cherry**  
#824 Lipsheer SPF 15



**Cranberry**  
#912



**Dahlia Red**  
#842



**Dark Amethyst**  
#841



**Moonlit Magenta**  
#906 Frosted



**Mystique Plum**  
#909



**Racy Red**  
#926

## Summer



**Berry Frosted**  
#854



**Clearly Rose**  
#828 Lipsheer SPF 15



**Dreamy Pink**  
#836 Frosted



**Mocha Mauve**  
#902



**New Pink**  
#910 Frosted



**Pink Tulip**  
#900 Frosted



**Perpetual Plum**  
#916



**Plum Sherbet**  
#922 Frosted

## Lipliners .01 oz.

3 Refills per tube  
(Add an "A" at the end of the item #)

### Autumn



**Brick**  
#970



**Mahogany**  
#988

### Spring



**Maplewood**  
#985

### Winter



**Garnet**  
#982



**Wineberry**  
#998

### Summer



**Frosted Apple**  
#978



**Rosewood**  
#995



Displayed blush is Mocha Mauve #902



# Spring to a new you!

## All Natural

With the current trends in fabric and cosmetics, designers finally got on board the "All Natural Train." It's more than just a look this season, it's about the fabric and items used to make your wonderful wardrobe. The colors are kept simple and usually stay within the white-cream-brown range. Accessories and makeup are minimal. Beautiful skin is what helps balance this look.



## Reinvent yourself!

Do you want to know what type of hairstyle or eyeglass shape is best for you? Do you wonder what your best look is in clothing styles? Necklines? Accessories? Discover these and more with Signia, our computerized system of silhouette analysis. As you find out your face shape and body balance, you will learn what styles harmonize with you. Learn how to enhance your best features and de-emphasize figure flaws. Set up your Signia analysis today by contacting your Beauty by Jeunique Consultant.

Available for men too!



### Marvelous Mascara

Keep your lashes beautiful all day long! Marvelous Mascara lengthens, defines, and thickens lashes for eyes that "WOW". Formulated for even the most sensitive eyes. Water-resistant but easy to remove. Never worry about flaking or mascara build-up!

.25 oz.

#670 Black

#672 Brown

#674 Navy

#675 Eggplant





# Red Hot

Red is smoking this season! If you don't care for the simple, pale and natural looking hues this season, red is your color. The red seen this season is different from the common trend shown during Fall. This red is very warm, tempting and flirty. It adds a little bit of spice and everything nice to this season's palette.



## Color Alliance Lifestyle Palettes

Wearing the right colors can brighten and beautify your whole appearance. Beauty by Jeunique Color Palettes coordinate colors that will best complement your hair, skin and eye colors. Your personalized color palette can be used as a reference in choosing your makeup, wardrobe and accessories. No more guessing which colors look best on you. Contact your Beauty by Jeunique Consultant to get your color analysis done today!

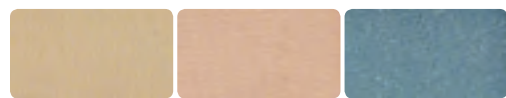


# Eyeshadows

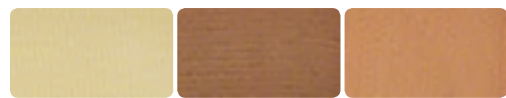
Our eyeshadows blend easily for long lasting color.  
Mix and match shades for eyes that will come alive!  
**.05 oz.**

Model is wearing  
French Vanilla,  
Boysenberry  
and Provocatif.

## Autumn



**Almond Creme** #1406  
**Apricot** #1412  
**Blue Lagoon** #6655



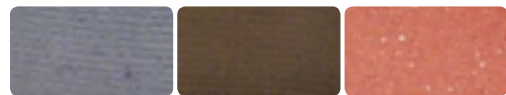
**Busy Bee** #1401  
**Chestnut** #1427  
**Conch** #1425



**Copperlit** #6648  
**Glazed Apricot** #1520  
**Iris** #1402



**Mediterranean** #6649  
**Sahara** #6661  
**Sand** #1488



**Seastorm** #1491  
**Smoke** #1499  
**Sweet Orange** #1521

## DUOS .10 oz.



**Apricot Sunset** #6636



**Berry Parfait** #6637

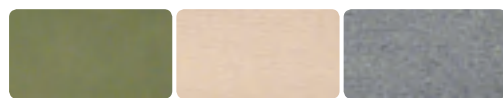
## Spring



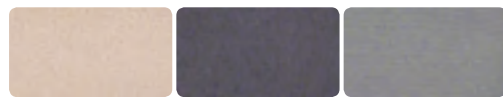
**Almond Beige** #6640  
**Apricot** #1412  
**Arctic** #6660



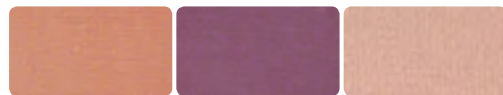
**Champagne** #6641  
**Conch** #1425  
**Dresden Blue** #1437



**Emeraude Jade** #1439  
**Glazed Apricot** #1520  
**Golden Blue** #1493



**Natural Pearls** #1474  
**Night** #1476  
**Ocean** #1478

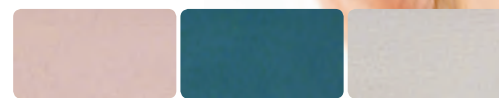


**Peachy Keen** #6657  
**Persian Violet** #1480  
**Pixie Dust** #6389



**Plant** #1479  
**Seastorm** #1491

## Winter



**Clear Pink** #1432  
**Deep Teal** #6656  
**Diamond** #1436



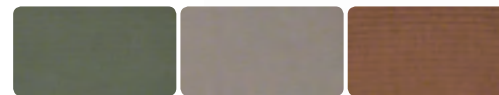
**Dusk** #6652  
**Egyptian Blue** #1411  
**Feldspar** #1441



**Night Mist** #1473  
**Pearly Shells** #1477  
**Periwinkle** #6658



**Prairie Dusk** #6645  
**Provocatif** #6349  
**Purple Mist** #1482

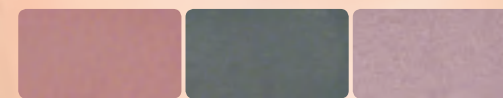


**Rain Forest** #1483  
**Slate Gray** #1492  
**Soft Sable** #1502



**SugarPlums** #1409  
**Winter Wind** #1413

## Summer



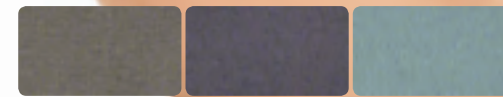
**Amethyst** #1408  
**Aurora Blue** #1419  
**Boysenberry** #1523



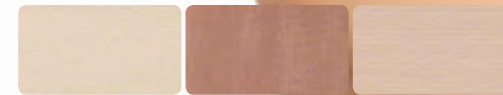
**Charcoal** #1429  
**Cherrywood** #1433  
**Close-up Cocoa** #1430



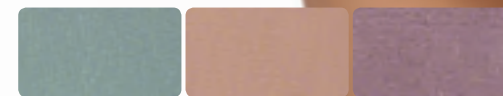
**Cool Suede** #1428  
**Dresden Blue** #1437  
**Feldspar** #1441



**Money! Money!** #1403  
**Night** #1476  
**Sea Green** #1410



**French Vanilla** #1522  
**Irresistible** #6348  
**Mallow** #1462



**Serenity** #6390  
**Smoky Pink** #1500  
**Tropical Orchid** #6644



# Start your own Business. Today!



*Beauty*  
by/par  
Jeunique®

Showcase/Update Booklet Spring/Summer 2010

FOR MORE INFORMATION  
CONTACT YOUR CONSULTANT:

- Easy startup.
- A business with flexible hours that work around your schedule.
- Earn the extra income you always wanted.
- Qualify for free trips to exciting destinations.



6 65971 13696 9

Stock# 7470 01/10

Jeunique International, Inc.,  
19501 E. Walnut Dr. South, City of Industry, CA 91748

Printed on Recycled Paper in U.S.A.